

**KNOW  
BEFORE  
YOU  
GO**

# TAYLOR SWIFT | THE ERAS TOUR

May 26, 27 & 28, 2023 | METLIFE STADIUM

## EVENT DAY TIMELINE

- 12:30 PM: Lots / Drop-Off / Lot E Merch Area Opens
- 3:30 PM: Coach USA bus service from NYC begins
- 4:07/4:17 PM: NJ TRANSIT service from Secaucus begins
- 4:30 PM: All Gates Open / Inside Stadium Merch Opens
- 6:30 PM: Concert Begins
- 10:00 PM: Pick-Up Lots Open

## SPECIAL GUESTS

- Friday, May 26: Phoebe Bridgers & GAYLE
- Saturday, May 27: Phoebe Bridgers & Gracie Abrams
- Sunday, May 28: Phoebe Bridgers & OWENN

\*\*\*\*\*

## MERCHANDISE

**Early Merch Day – Open to the Public (no show ticket required)**

**Thursday, May 25 from 10am – 8pm**

**MetLife Stadium Flagship Store – located at the MetLife Gate Entrance**

All fans will have the opportunity to purchase Taylor Swift | The Eras Tour merchandise at the MetLife Stadium Flagship Store on the day before the concerts begin.

- Complimentary parking in Lots F and G. There is no train service on Thursday.
- Enter at MetLife Gate – Clear Bag Policy is in effect and all guests will go through security scanning.
- MetLife Stadium is cash-free at all retail locations. Credit/debit payments only. A reverse ATM is onsite.
- Items will be sold on a first come, first served basis.
- The line will be capped to accommodate the 8pm close.

## Show Days - Friday, Saturday, Sunday

- The Merchandise Area will be located in Parking Lot E, between the MetLife and Verizon gates. It will open at 12:30pm and is accessible to ticketholders for that show day only.
- The Flagship Store is located inside the stadium gates at the MetLife entrance and will open at 4:30pm on show days.
- There are multiple merchandise stands located throughout the stadium on all concourses and they will also open at 4:30pm on show days.

\*\*\*\*\*

## TICKETING

- **Tickets will not be sold at the MetLife Stadium Box Office prior to or on show days.**
- If the tour has any last-minute releases, all tickets will be sold at Ticketmaster.com.
- Check your tickets and make sure you have the correct ticket in hand for the day you show up!
- Barcodes for ticket scanning will appear 8 hours prior to the event.
- Guests with floor tickets (Sections 1-15) use any gate for entry and proceed to HCL Tech Plaza for floor entry.

### Mobile Ticketing:

- Your ticket must be displayed on your phone to enter the event.
- Tickets will not be emailed or available to print.
- Please have your mobile ticket downloaded before you enter the security line.
- **How To Display Mobile Tickets On Your Phone:**
  - [Download the Ticketmaster App.](#)
  - Find your mobile tickets in “My Events,” and add them to your phone’s wallet.
  - Send Tickets directly to everyone else in your party.
  - Display your mobile ticket at entry and you’re in!

## TRANSPORTATION – ARRIVE EARLY AND CARPOOL IF POSSIBLE, HEAVY TRAFFIC IS ANTICIPATED!

### Parking

- **An event ticket corresponding to that evening's show is required to access and park in all lots.**
- Tickets will be checked upon entry into the lots.
- If you do not have an event ticket, you will be turned away.
- Take a photo of the pole number near your car to remember where you parked.

Lots Open:	12:30pm
Lot Access:	<b>A valid show ticket for that evening's show is required to enter stadium parking lots.</b>
Parking Fee:	\$40 per standard sized vehicle; \$160 per bus/RV/oversized vehicle.
Payment Options:	Credit cards and cash accepted at entry plazas. Have payment ready as you enter.
Directions:	<a href="http://metlifestadium.com/getting-here/directions">metlifestadium.com/getting-here/directions</a>
Tailgating Policy:	Tailgating is permitted for ticket holders only. Additional Details: <a href="http://bit.ly/RT73KF">bit.ly/RT73KF</a>

### Drop-Offs / Pick-Ups

- Parents dropping off their children (with tickets) and remaining on property:
  - Pay to park in the lot closest to your arrival point.
  - Ticketholders must be in car to access paid lots.
- Parents dropping off their children and returning to pick them up after the show:

**Drop-Offs:** Drop-offs may start as early as 12:30pm

There are 3 locations for pre-event drop-offs:

1. Roadway between Lots D and E
2. The Back of Lot E
3. Lot I (near the Giants Training Center)

**Pick-Ups:** You may return starting at 10:00 PM at one of these pickup areas:

1. The Ride Share Pick Up in Lot E
2. The back of Lot E
3. Lot D

### NJ TRANSIT

- NJ TRANSIT rail service will be operational from Secaucus Junction to MetLife Stadium via the Meadowlands Line beginning at 4:07pm on Friday and 4:17pm on Saturday & Sunday. There is no train service on Thursday.
- Check <https://www.njtransit.com/meadowlands> for schedule and departure updates.
- Take a NJ TRANSIT train to Secaucus Junction from NY Penn Station or NJ Transit Stations.
- Once you arrive in Secaucus, transfer to a direct shuttle train to the Meadowlands Rail Station.
- Purchase your round-trip tickets in advance by using the [NJ TRANSIT Mobile App](#) to avoid long lines and delays.

### Coach USA Bus

- The 351 Meadowlands Express bus will operate from Area X (41<sup>st</sup> Street between 8<sup>th</sup> & 9<sup>th</sup> Avenue) at Port Authority direct to MetLife Stadium (parking lot K) starting at 3:30pm with return service after the event ends.
- The last departing bus from Port Authority to MetLife Stadium will leave NYC at 6:45pm.
- The last bus will leave the stadium to return to NYC Port Authority 60 minutes after the concert ends.
- Round-trip tickets are \$14 and are available for purchase in advance at [bit.ly/351express](http://bit.ly/351express).

### Rideshare

- Designated rideshare (Uber, Lyft, etc.) pick-up/drop-off location is in Lot E and possibly Lot D pending volume.
- Rideshare surge pricing is often in effect after the event.
- Larger crowds will result in longer than usual wait times for a car to arrive.
- Make sure your phone is charged and ready to go if you're planning to use one of these services!

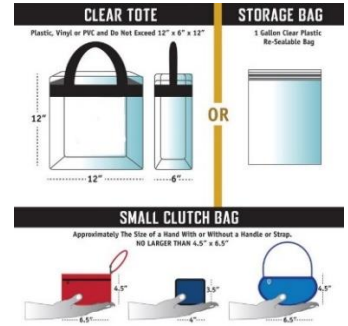
**SECURITY SCREENING**

- All guests will be subject to screening via a walk-through metal detector at the stadium gates.
- Guests will be required to place their cell phones, cameras, keys, and all metal objects on the security table prior to walking through the metal detector.
- Belts and jewelry do not need to be removed.
- Guests should only bring those items they absolutely need while attending the event.
- Please leave enough time to get to your seats; the earlier you arrive the better.

\*\*\*\*\*

**CLEAR BAG POLICY**

- Non-clear small purses 4.5” x 6.5” or smaller are allowed.
- Clear bags of any style (including backpacks) 12” x 6” x 12” or smaller are allowed.
- Bags must be completely clear and free of any color tint.



\*\*\*\*\*

**PERMITTED ITEMS**

- Banners and signs smaller than 11” x 17”
- Polaroid cameras and small portable phone chargers
- Non-professional cameras (no attached or extendable lenses; no cases)
- Friendship bracelets may be worn or placed in a clear bag
- Factory sealed water/soft-drink bottles that are 20 oz. or less
- Medically necessary items, subject to inspection upon entry

\*\*\*\*\*

**PROHIBITED ITEMS**

- For a full list of prohibited items, click here: <https://bit.ly/3MAr5Hi>

\*\*\*\*\*

**ACCESSIBLE SERVICES**

- MetLife Stadium welcomes members of our disabled community.
- To help you plan your visit, please click [here](#) to read about our accessible services, programs, and policies.
- For questions prior to the event, email us at [info@metlifestadium.com](mailto:info@metlifestadium.com) or call 201-559-1515.

\*\*\*\*\*

**CONTACTLESS AND CASHLESS PAYMENTS ONLY**

- MetLife Stadium operates cash-free. Only contactless payment options will be accepted within the stadium.
- Pay with a debit or credit card (Visa is the preferred card of MetLife Stadium, Mastercard, AMEX, Discover).
- Mobile payment, including Apple Pay and Google Pay, is accepted.
- Reverse ATMs are available onsite to load cash onto a prepaid Visa debit card valid for in-stadium purchases.
- For more information click here: <https://bit.ly/3okmnFu>

\*\*\*\*\*

**ENJOY THE SHOW!!**